

Corporate Fashion

Explore Now

We would like to invite you to our B2B Webshop. Make use of the advantages of our trade portal:

- Easy ordering process directly via internet – around the clock
- Up to date information about the availability of all webshop articles
- Visualisation of articles
- In the marketing section you can get up-to-date seasonal material

We are looking forward to welcoming you to our B2B Webshop for dealers. Start your Seidensticker online purchase now.

Any questions? Please contact us:
sales-men@seidensticker.com

Wir laden Sie herzlich in unseren B2B Webshop ein. Nutzen Sie die Vorteile unseres Händlerportals:

- Einfache Bestellung direkt im Internet – rund um die Uhr
- Aktuelle Informationen zur Verfügbarkeit der Webshop Artikel
- Visualisierung der Artikel
- Im Marketingbereich steht Ihnen aktuelles Saisonmaterial zur Verfügung

Wir würden uns freuen, Sie in unserem B2B Webshop für Händler begrüßen zu dürfen. Starten Sie direkt mit dem Online-Einkauf bei Seidensticker.

Sie haben Fragen? Bitte kontaktieren Sie uns:
sales-men@seidensticker.de

www.seidensticker-b2b.com

Sales Germany

Fon: +49 (0) 521 306 - 472
Fax: +49 (0) 521 306 - 755
salesomen@seidensticker.de

Freecall No: 0800 - 4363000

Sales International

Fon: +49 (0) 521 306 - 590
Fax: +49 (0) 521 306 - 755
sales-men@seidensticker.com

Freecall No: 00800 - 74478000

Content

Fit Guide Menswear	6
Fit Guide Womenswear	7
Core Product Range	8-19
Menswear Special	20-29
Womenswear Special	30-37
Accessories	40-42
T-Shirts	43
Measurements Menswear	44-45
Measurements Womenswear	46-49

Fashion Cloud

We provide you a free and fast access to our image material. Campaign und product images are now available on: www.fashion.cloud

Wir ermöglichen Ihnen einen kostenlosen und schnellen Zugang zu unserem Bildmaterial. Image- und Produktmotive stehen Ihnen unter www.fashion.cloud zur Verfügung.

Collar Styles



Business Kent



Spread Kent



Button Down

Caption



Cotton
Baumwolle



Silk
Seide



Elasthane
Elasthan



Polyamide
Polyamid



Non-iron
Bügelfrei



Easy Care
Bügelleicht



Double Seams
Doppelnaht



Breast Pocket
Brusttasche



Colored buttons
Kontrastknöpfe



Long Sleeve
Langarm



Short Sleeve
Halbarm



Rose embroidery on
the left front side
Rose Stickung auf der
linken Vorderseite

ELA

Extra Long Sleeve
Extra Langer Arm

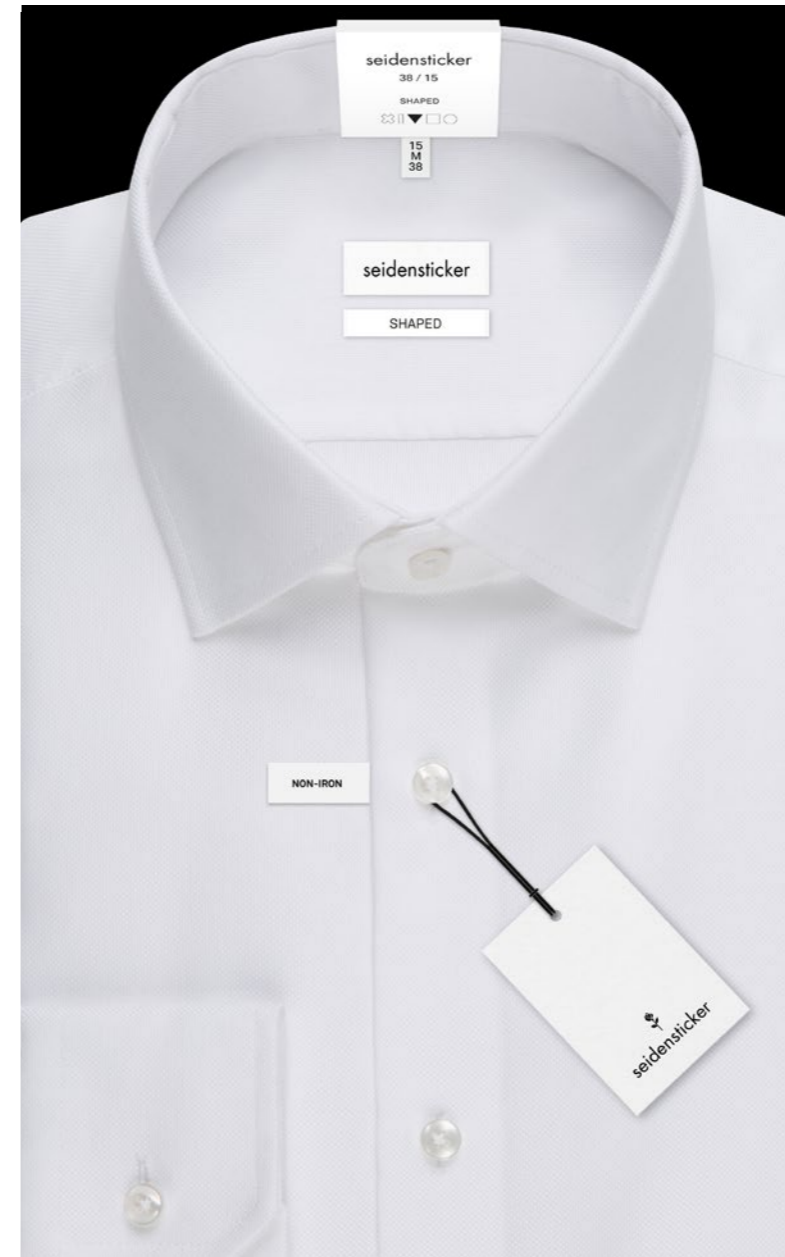
UMA

Double Cuff
Umschlagmanschette

OA

Sleeveless
Ohne Arm

Labeling



Collar Tag

Paper label, sizing and fit.

Size Label

Woven label, sizing.

Main Label

Woven label, fit.

Fit Label

Woven label, fit.

Main Hangtag

Paper label.

Bracket Flag Label

Woven label, specification.

Button Label

Paper label, ELS & ESS.

Fit Guide Menswear

X-SLIM	✘	Waist 94 cm for size 40 Two back darts for slimmer waist 100% cotton Non-iron finishing Size: 14 - 17½ inch	Taillenweite 94 cm bei Größe 40 Zwei Rückenabnäher für die schmale Taillenweite 100% Baumwolle Non-iron Ausrüstung Größe: 36 - 44
SLIM	▮	Waist 98 cm for size 40 Two back darts for slimmer waist 100% cotton Non-iron finishing Size: 14 - 17¾ inch	Taillenweite 98 cm bei Größe 40 Zwei Rückenabnäher für die schmale Taillenweite 100% Baumwolle Non-iron Ausrüstung Größe: 36 - 45
SHAPED	▼	Waist 102 cm for size 40 Two back darts for slightly slimmer waist 100% cotton Non-iron finishing Size: 14½ - 18 inch	Taillenweite 102 cm bei Größe 40 Zwei Rückenabnäher für die taillierte Passform 100% Baumwolle Non-iron Ausrüstung Größe: 37 - 46
REGULAR	■	Waist 108 cm for size 40 Two side pleats for better ease of movement 100% cotton Non-iron finishing Size: 15 - 19 inch	Taillenweite 108 cm bei Größe 40 Zwei Seitenfalten für bessere Bewegungsfreiheit 100% Baumwolle Non-iron Ausrüstung Größe: 38 - 48
COMFORT	●	Waist 114 cm for size 40 Two side pleats for better ease of movement 100% cotton Non-iron finishing Size: 15½ - 21½ inch	Taillenweite 114 cm bei Größe 40 Zwei Seitenfalten für bessere Bewegungsfreiheit 100% Baumwolle Non-iron Ausrüstung Größe: 39 - 54

Fit Guide Womenswear

SLIM FIT

Including our slim fit styles as essential basics in your product range, you are able to provide availability across all seasons. The slim fit with a perfect waist offers highest wearing comfort whether made of 100% cotton or with some stretch.

Mit unseren Slim Fit Modellen nehmen Sie unverzichtbare Basics in Ihr Sortiment auf, die Sie saisonübergreifend anbieten können. Die schmale Passform mit einer perfekt modellierten Taillierung bietet höchsten Tragekomfort – ob aus 100% Baumwolle oder mit Stretch-Anteil.

REGULAR FIT

With the regular fit blouses we offer you a great colour range in the approved high-quality, non-iron cotton qualities. These styles for every type of figure are available from stock all year round.

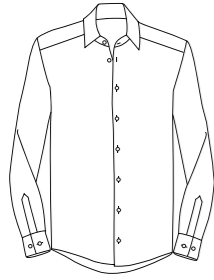
Bei den Regular Fit Blusen bieten wir Ihnen eine große Farbvarianz in den bewährten hochwertigen, bügelfreien Baumwollqualitäten. Diese Modelle für jeden Figurtyp sind ab Lager ganzjährig abrufbar.

Core Product Range

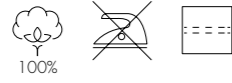


Whether shirt or blouse, Seidensticker basics are presented at the highest level. The comprehensive core product range comprises a variety of fabrics and styles that meet every demand.

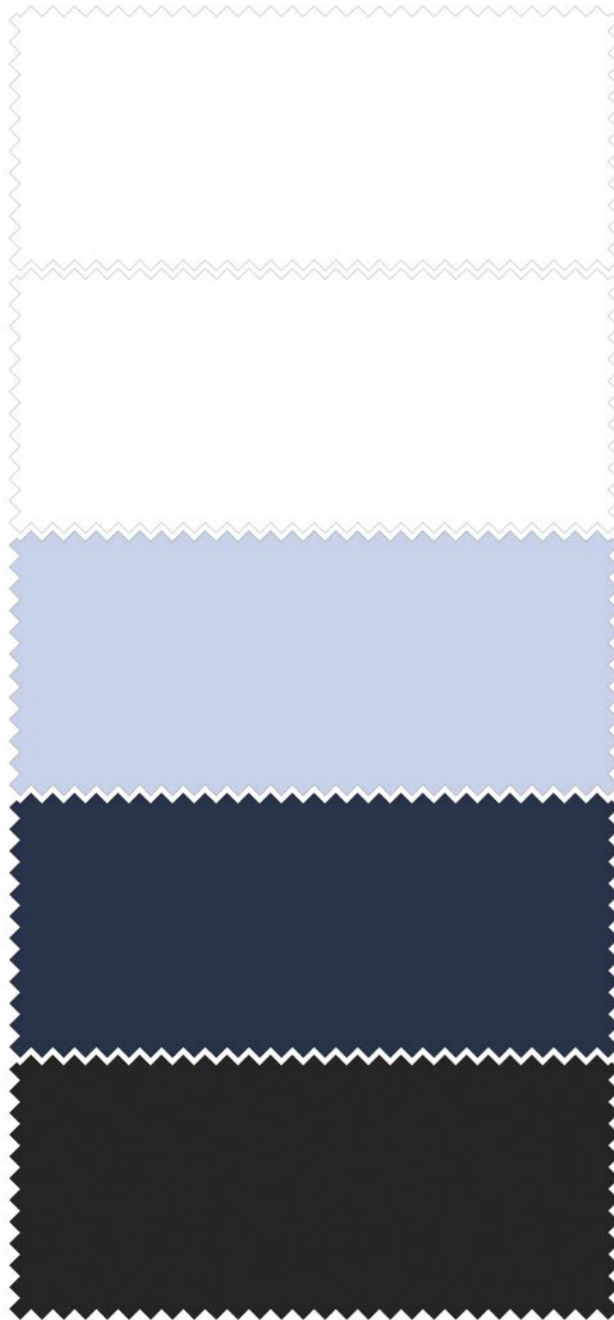
Ob Hemd oder Bluse, die Seidensticker Basics präsentieren sich auf höchstem Qualitätsniveau. Das umfangreiche Kernsortiment umfasst eine Vielfalt an Stoffen und Modellen, die sämtlichen Ansprüchen gerecht werden.



- X-Slim** Size: 14 - 17½ inch | Größe: 36 - 44
- Slim** Size: 14 - 17¾ inch | Größe: 36 - 45
- Shaped** Size: 14½ - 18 inch | Größe: 37 - 46
- Regluar** Size: 15 - 19 inch | Größe: 38 - 48
- Comfort** Size: 15½ - 21½ inch | Größe: 39 - 54



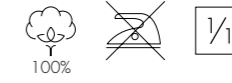
Poplin



- | | | |
|-----------|---------|----------------------|
| 474980/01 | ✘ ▽ □ ○ | Business Kent 1/1 |
| 675198/01 | ✘ ▽ □ ○ | Business Kent 1/1 |
| 021000/01 | ✘ ▽ □ ○ | Business Kent 1/1 |
| 003000/01 | ✘ ▽ ■ ○ | Business Kent 1/1 * |
| 312420/01 | ✘ ▽ □ ● | Business Kent 1/1 |
| | | |
| 675665/01 | ✘ ▽ □ ○ | Business Kent ELA |
| 021005/01 | ✘ ▽ □ ○ | Business Kent ELA |
| 003005/01 | ✘ ▽ ■ ○ | Business Kent ELA * |
| | | |
| 675198/14 | ✘ ▽ □ ○ | Business Kent 1/1 |
| 021000/14 | ✘ ▽ □ ○ | Business Kent 1/1 |
| 001000/12 | ✘ ▽ ■ ○ | Business Kent 1/1 |
| | | |
| 675198/19 | ✘ ▽ □ ○ | Business Kent 1/1 |
| 021000/19 | ✘ ▽ □ ○ | Business Kent 1/1 |
| 001000/19 | ✘ ▽ ■ ○ | Business Kent 1/1 |
| | | |
| 477870/39 | ✘ ▽ □ ○ | Business Kent 1/1 |
| 675198/39 | ✘ ▽ □ ○ | Business Kent 1/1 |
| 021000/84 | ✘ ▽ □ ○ | Business Kent 1/1 |
| 001000/84 | ✘ ▽ ■ ○ | Business Kent 1/1 * |



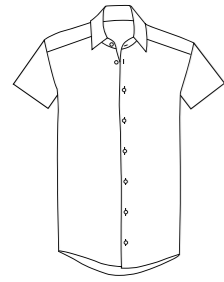
- Slim** Size: 32 - 48 | Größe: 32 - 48
- Regular** Size: 34 - 54 | Größe: 34 - 54



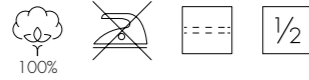
Poplin



- | | | |
|-----------|----------------|----------|
| 080635/01 | Slim | Kent 1/1 |
| 080604/01 | Regular | Kent 1/1 |
| | | |
| N° 1 | | |
| | | |
| 080604/18 | Regular | Kent 1/1 |
| | | |
| N° 1 | | |
| | | |
| 080635/39 | Slim | Kent 1/1 |
| 080604/39 | Regular | Kent 1/1 |
| | | |
| N° 1 | | |
| | | |
| 080613/01 | Slim | Kent 1/1 |
| | | |
| N° 2 | | |
| | | |
| 080613/18 | Slim | Kent 1/1 |
| | | |
| N° 2 | | |
| | | |
| 080613/39 | Slim | Kent 1/1 |
| | | |
| N° 2 | | |



- **Slim** Size: 14 - 17¼ inch | Größe: 36 - 45
- ▼ **Shaped** Size: 14½ - 18 inch | Größe: 37 - 46
- **Regluar** Size: 15 - 19 inch | Größe: 38 - 48
- **Comfort** Size: 15½ - 21½ inch | Größe: 39 - 54



Poplin

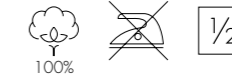


- | | | |
|-----------|-----------|----------------------|
| 676521/01 | ☒ ▽ □ ○ | Business Kent 1/2 |
| 021001/01 | ☒ ▽ ▽ □ ○ | Business Kent 1/2 |
| 003001/01 | ☒ ▽ ▽ ■ ○ | Business Kent 1/2 ☒* |
| 312421/01 | ☒ ▽ ▽ □ ● | Business Kent 1/2 ☒ |
| | | |
| 676521/14 | ☒ ▽ □ ○ | Business Kent 1/2 |
| 021001/14 | ☒ ▽ ▽ □ ○ | Business Kent 1/2 |
| 001001/12 | ☒ ▽ ▽ ■ ○ | Business Kent 1/2 ☒ |
| | | |
| 676521/19 | ☒ ▽ □ ○ | Business Kent 1/2 |
| 021001/19 | ☒ ▽ ▽ □ ○ | Business Kent 1/2 |
| 001001/19 | ☒ ▽ ▽ ■ ○ | Business Kent 1/2 ☒ |
| | | |
| 676521/39 | ☒ ▽ □ ○ | Business Kent 1/2 |
| 021001/84 | ☒ ▽ ▽ □ ○ | Business Kent 1/2 |
| 001001/84 | ☒ ▽ ▽ ■ ○ | Business Kent 1/2 ☒ |

* Size: 15 - 21½ inch | Größe: 38 - 54



- Slim** Size: 32 - 48 | Größe: 32 - 48
- Regular** Size: 34 - 48 | Größe: 34 - 48

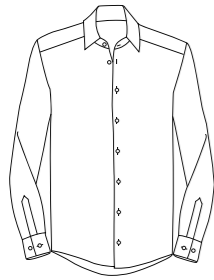


Poplin

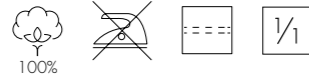


- | | | |
|-----------|----------------|------------|
| 080636/01 | Slim | Kent 1/2 |
| 080605/01 | Regular | Kent 1/2 * |
| | | |
| | | N° 1 |
| | | |
| 080605/39 | Regular | Kent 1/2 |
| | | |
| | | N° 1 |
| | | |
| 080614/01 | Slim | Kent 1/2 |
| | | |
| | | N° 2 |
| | | |
| 080614/39 | Slim | Kent 1/2 |
| | | |
| | | N° 2 |

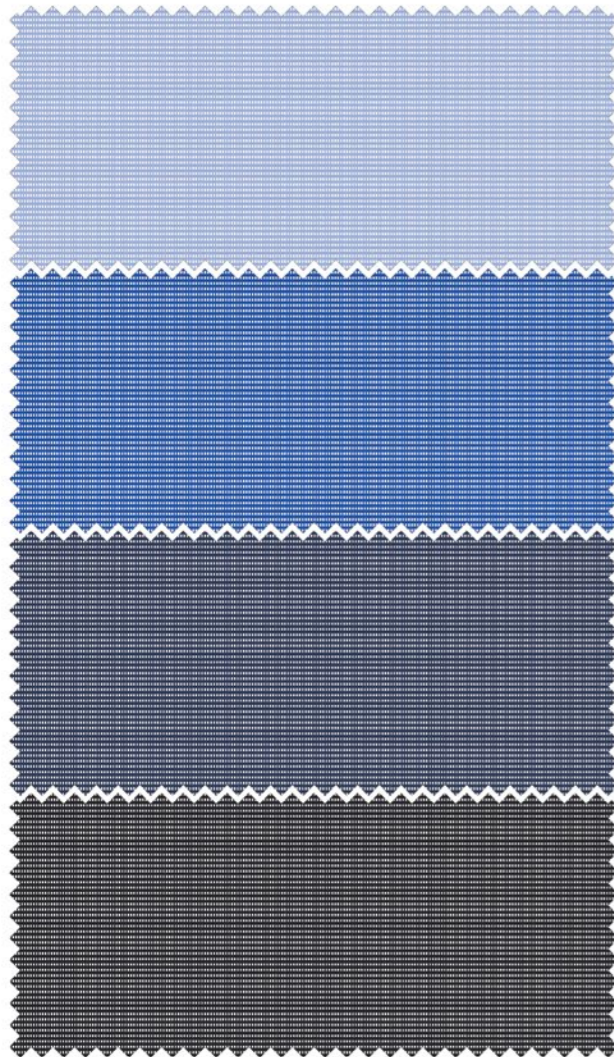
* Size: 34 - 54 | Größe: 34 - 54



- X-Slim** Size: 14 - 17½ inch | Größe: 36 - 44
- Slim** Size: 14 - 17¼ inch | Größe: 36 - 45
- Shaped** Size: 14½ - 18 inch | Größe: 37 - 46
- Regular** Size: 15 - 19 inch | Größe: 38 - 48



Fil à Fil

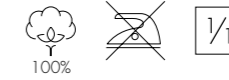


- | | | |
|-----------|---------|---------------------|
| 474980/12 | ✘ ▽ □ ○ | Business Kent 1/1 |
| 666260/10 | ✘ ▽ □ ○ | Business Kent 1/1 |
| 241600/10 | ✘ ▽ □ ○ | Business Kent 1/1 |
| 003000/48 | ✘ ▽ □ ○ | Business Kent 1/1 * |
| | | |
| 666260/11 | ✘ ▽ □ ○ | Business Kent 1/1 |
| 241600/14 | ✘ ▽ □ ○ | Business Kent 1/1 |
| 003000/14 | ✘ ▽ □ ○ | Business Kent 1/1 * |
| | | |
| 666260/13 | ✘ ▽ □ ○ | Business Kent 1/1 |
| 241600/13 | ✘ ▽ □ ○ | Business Kent 1/1 |
| 003000/13 | ✘ ▽ □ ○ | Business Kent 1/1 * |
| | | |
| 666260/37 | ✘ ▽ □ ○ | Business Kent 1/1 |
| 241600/34 | ✘ ▽ □ ○ | Business Kent 1/1 |
| 003000/67 | ✘ ▽ □ ○ | Business Kent 1/1 * |

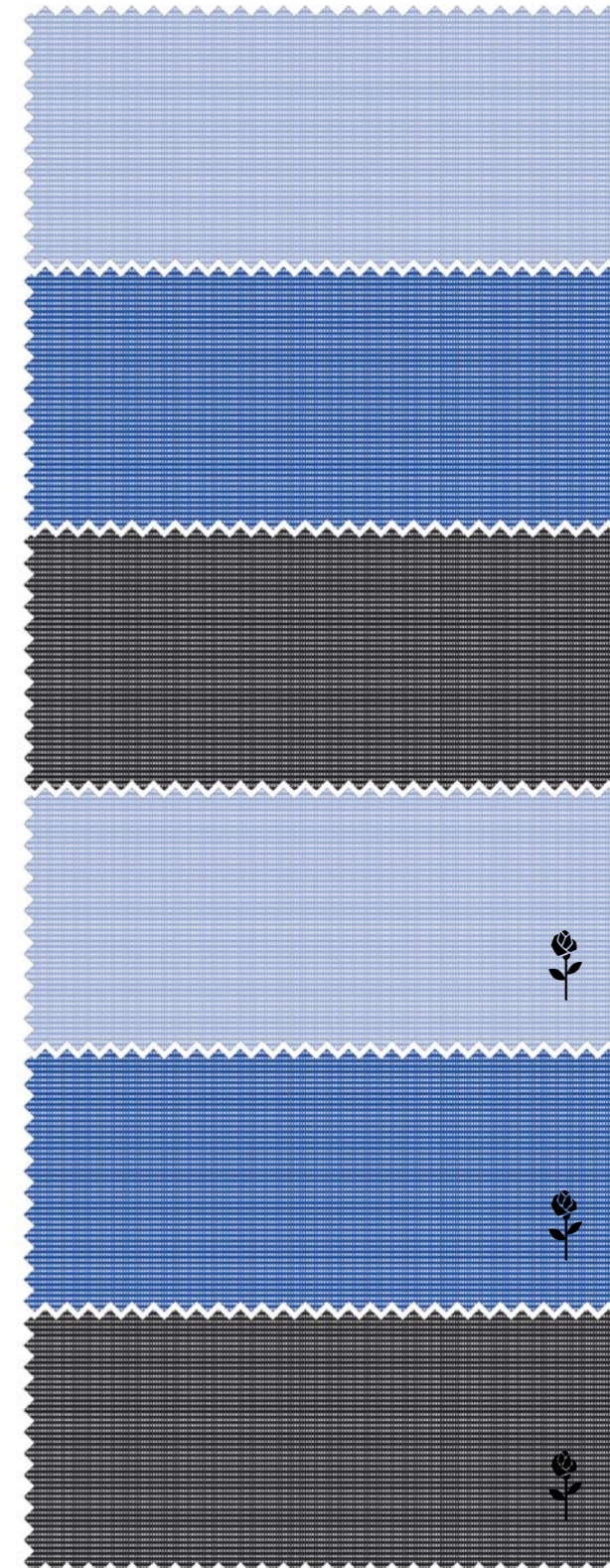
* Size: 15 - 21½ inch | Größe: 38 - 54



- Slim** Size: 32 - 48 | Größe: 32 - 48
- Regular** Size: 34 - 54 | Größe: 34 - 54



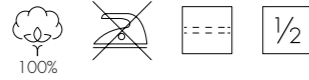
Fil à Fil



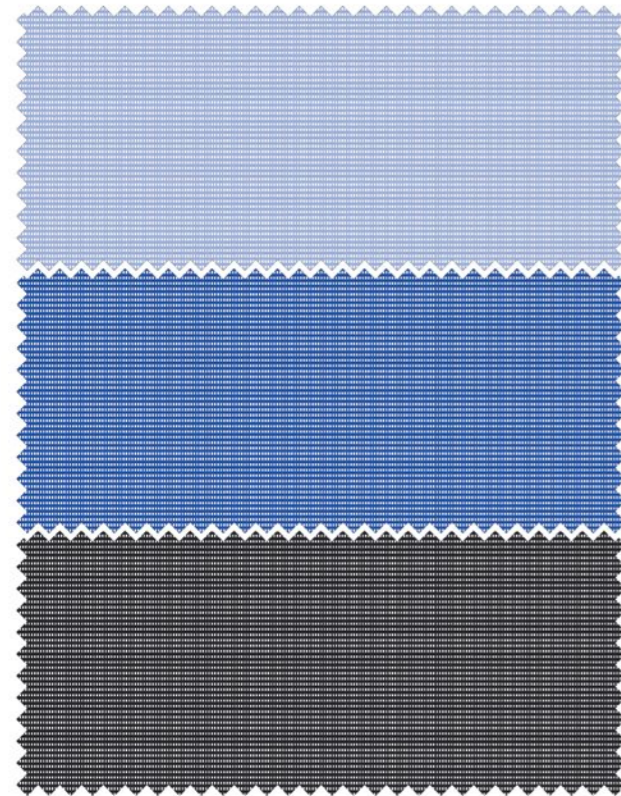
- | | | |
|-----------|----------------|----------|
| 080604/12 | Regular | Kent 1/1 |
| | | N° 1 |
| | | |
| 080604/14 | Regular | Kent 1/1 |
| | | N° 1 |
| | | |
| 080604/33 | Regular | Kent 1/1 |
| | | N° 1 |
| | | |
| 080613/12 | Slim | Kent 1/1 |
| | | N° 2 |
| | | |
| 080613/14 | Slim | Kent 1/1 |
| | | N° 2 |
| | | |
| 080613/33 | Slim | Kent 1/1 |
| | | N° 2 |



- **Slim** Size: 14 - 17¼ inch | Größe: 36 - 45
- ▼ **Shaped** Size: 14½ - 18 inch | Größe: 37 - 46
- **Reglular** Size: 15 - 19 inch | Größe: 38 - 48



Fil à Fil



- 666261/10 Business Kent 1/2
- 241601/10 Business Kent 1/2
- 003001/48 Business Kent 1/2

- 666261/11 Business Kent 1/2
- 241601/14 Business Kent 1/2
- 003001/14 Business Kent 1/2 *

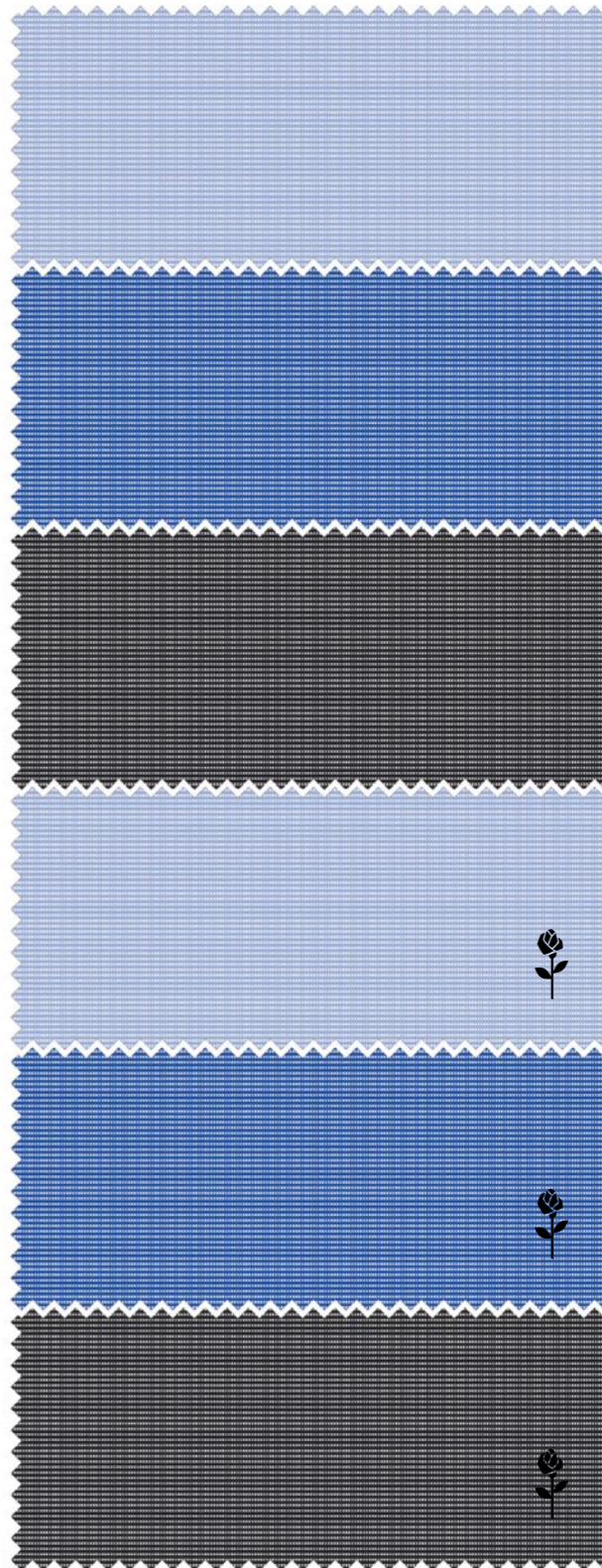
- 666261/37 Business Kent 1/2
- 241601/34 Business Kent 1/2
- 003001/67 Business Kent 1/2



- Slim** Size: 32 - 48 | Größe: 32 - 48
- Regular** Size: 34 - 48 | Größe: 34 - 48



Fil à Fil



- 080605/12 **Regular** Kent 1/2
- N° 1

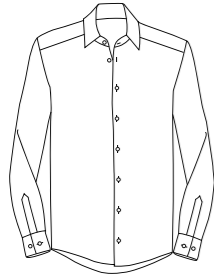
- 080605/14 **Regular** Kent 1/2
- N° 1

- 080605/33 **Regular** Kent 1/2
- N° 1

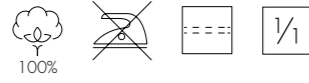
- 080614/12 **Slim** Kent 1/2
- N° 2

- 080614/14 **Slim** Kent 1/2
- N° 2

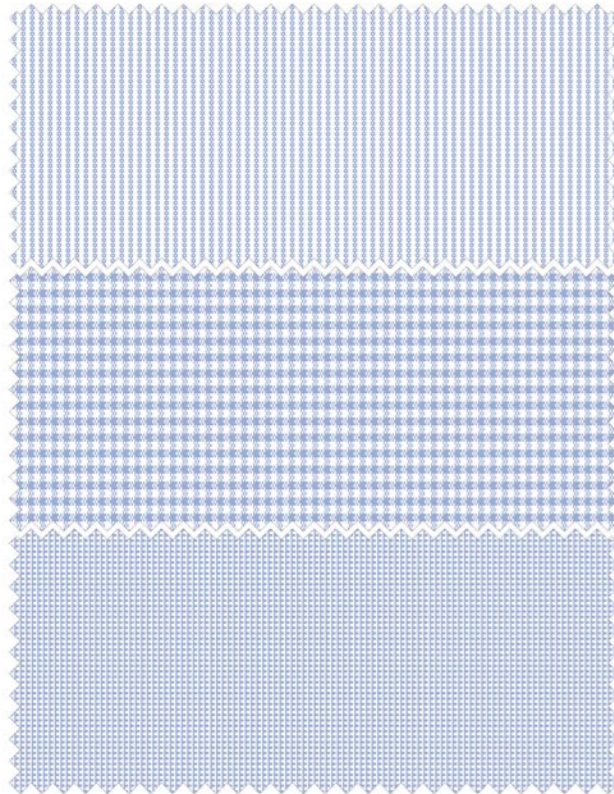
- 080614/33 **Slim** Kent 1/2
- N° 2



- Slim Size: 14 - 17¼ inch | Größe: 36 - 45
- ▼ Shaped Size: 14½ - 18 inch | Größe: 37 - 46
- Regular Size: 15 - 19 inch | Größe: 38 - 48



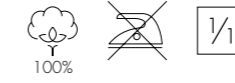
Office



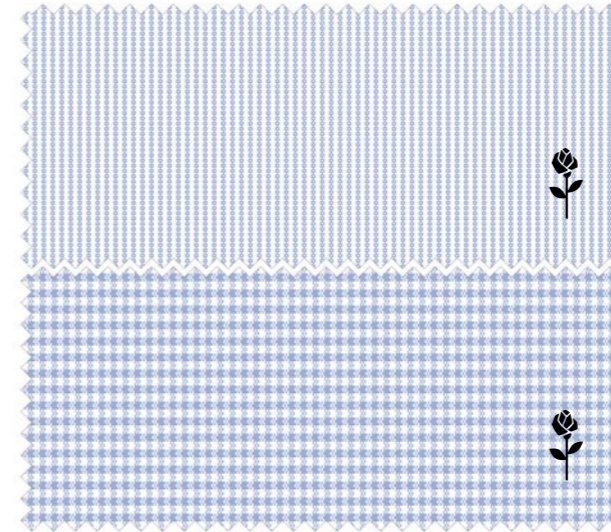
- | | | |
|-----------|-------|-------------------|
| 660020/11 | ☒■▽□○ | Business Kent 1/1 |
| 246670/11 | ☒□▼□○ | Business Kent 1/1 |
| 112810/11 | ☒□▼■○ | Business Kent 1/1 |
| | | |
| 660030/12 | ☒■▽□○ | Business Kent 1/1 |
| 246680/12 | ☒□▼□○ | Business Kent 1/1 |
| 112820/12 | ☒□▼■○ | Business Kent 1/1 |
| | | |
| 666230/11 | ☒■▽□○ | Business Kent 1/1 |
| 242610/11 | ☒□▼□○ | Business Kent 1/1 |
| 003100/11 | ☒□▼■○ | Business Kent 1/1 |



Slim Size: 32 - 48 | Größe: 32 - 48



Office



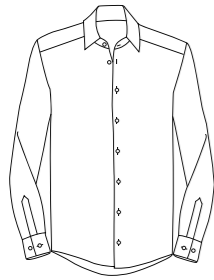
- | | | |
|-----------|-------------|----------|
| 080619/11 | Slim | Kent 1/1 |
| | | |
| 080619/12 | Slim | Kent 1/1 |

Menswear Special

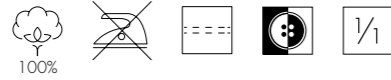


Precision is the constant criterion for first-class wearing comfort. Seidensticker offers the perfect shirt for every occasion with its five different fits X-Slim, Slim, Shaped, Regular and Comfort. Non-iron styles made of pure cotton and shirts in natural stretch quality in selected fittings underline the high claim to comfort within the product philosophy.

Präzision ist der fortwährende Maßstab für ein erstklassiges Trageerlebnis. Mit den fünf Passformen X-Slim, Slim, Shaped, Regular und Comfort bietet Seidensticker für jeden Anlass das perfekte Hemd. Bügelfreie Modelle aus reiner Baumwolle und Hemden in Natural Stretch-Qualität in ausgewählten Passformen unterstreichen den hohen Anspruch an Komfort innerhalb der Produktphilosophie.



- Slim Size: 14 - 17¼ inch | Größe: 36 - 45
- ▼ Shaped Size: 14½ - 18 inch | Größe: 37 - 46
- Regular Size: 15 - 19 inch | Größe: 38 - 48



Poplin Patch



- 693690/01 Business Kent Patch 1/1
- 293690/01 Business Kent Patch 1/1
- 193690/01 Business Kent Patch 1/1

- 693690/14 Business Kent Patch 1/1
- 293690/14 Business Kent Patch 1/1
- 193690/14 Business Kent Patch 1/1

- 693690/19 Business Kent Patch 1/1
- 293690/19 Business Kent Patch 1/1
- 193690/19 Business Kent Patch 1/1

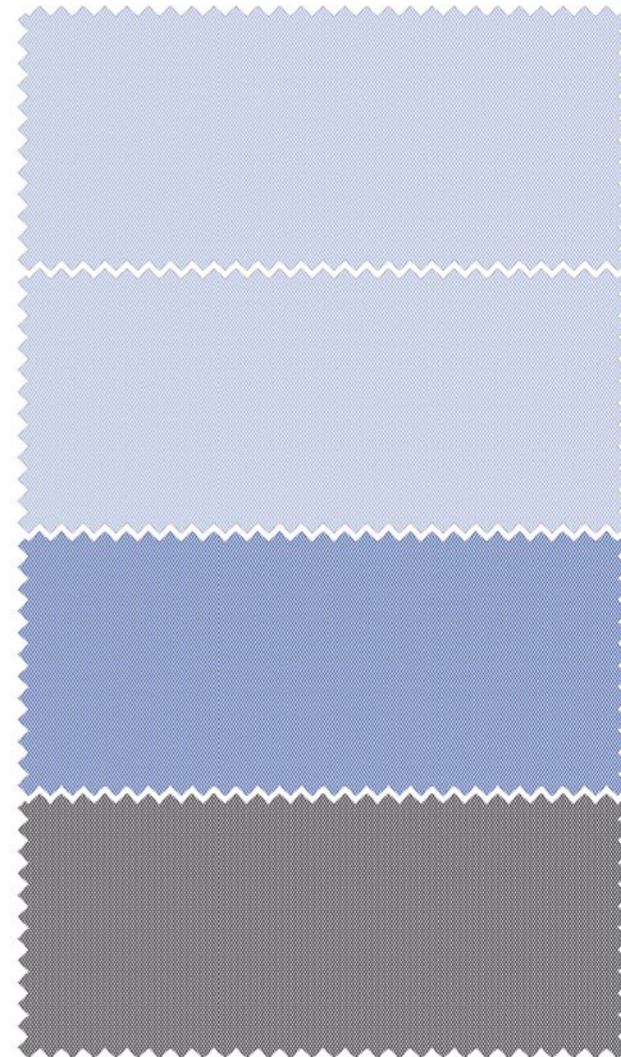
- 693690/39 Business Kent Patch 1/1
- 293690/39 Business Kent Patch 1/1
- 193690/39 Business Kent Patch 1/1



- ✱ X-Slim Size: 14 - 17½ inch | Größe: 36 - 44
- Slim Size: 14 - 17¼ inch | Größe: 36 - 45
- ▼ Shaped Size: 14½ - 18 inch | Größe: 37 - 46
- Regular Size: 15 - 19 inch | Größe: 38 - 48



Chambray

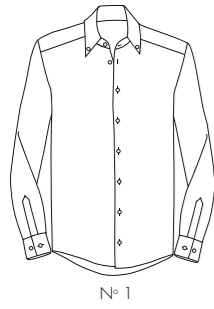


- 666250/11 Business Kent 1/1
- 022000/15 Business Kent 1/1
- 002000/15 Business Kent 1/1

- 666255/11 Business Kent ELA
- 021005/15 Business Kent ELA
- 193715/15 Business Kent ELA

- 666250/16 Business Kent 1/1
- 022000/16 Business Kent 1/1
- 002000/16 Business Kent 1/1

- 477870/32 Business Kent 1/1
- 666250/37 Business Kent 1/1
- 022000/32 Business Kent 1/1
- 002000/32 Business Kent 1/1



- Slim Size: 14 - 17¼ inch | Größe: 36 - 45
- ▼ Shaped Size: 14½ - 18 inch | Größe: 37 - 46
- Regular Size: 15 - 19 inch | Größe: 38 - 48



Poplin



- 666242/01 ☒ ▽ □ ○ Button Down 1/1
- 293702/01 ☒ ▽ □ ○ Button Down 1/1
- 003002/01 ☒ ▽ ■ ○ Button Down 1/1

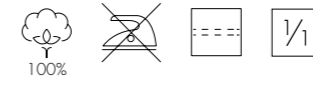
N° 1

- 666243/01 ☒ ▽ □ ○ Button Down 1/2
- 293703/01 ☒ ▽ □ ○ Button Down 1/2
- 003011/01 ☒ ▽ ■ ○ Button Down 1/2

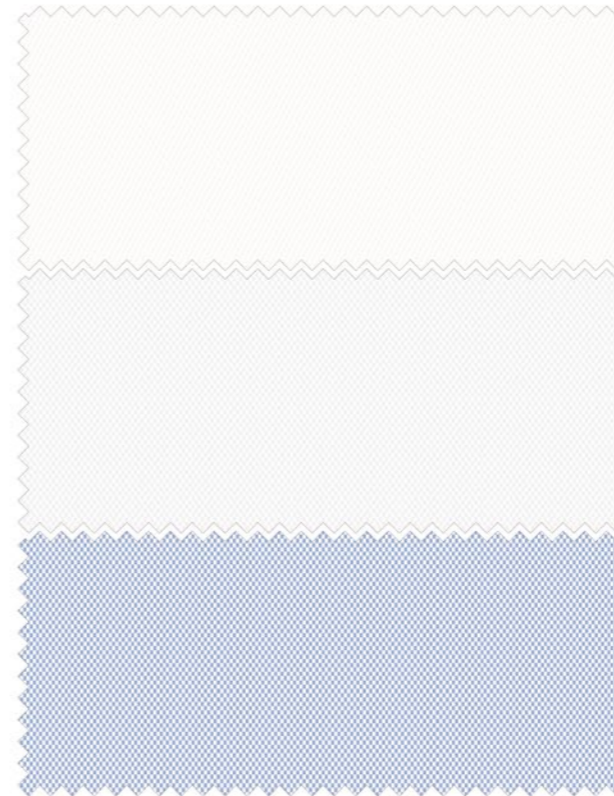
N° 2



- Slim Size: 14 - 17¼ inch | Größe: 36 - 45
- ▼ Shaped Size: 14½ - 18 inch | Größe: 37 - 46
- Regular Size: 15 - 19 inch | Größe: 38 - 48



Twill & Oxford



- 695007/01 ☒ ▽ □ ○ Spread Kent 1/1
- 295007/01 ☒ ▽ □ ○ Spread Kent 1/1
- 195007/01 ☒ ▽ ■ ○ Spread Kent 1/1

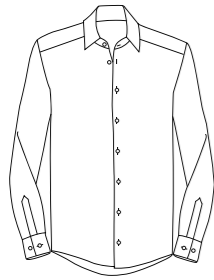
Twill

- 693677/01 ☒ ▽ □ ○ Spread Kent 1/1
- 293677/01 ☒ ▽ □ ○ Spread Kent 1/1
- 193677/01 ☒ ▽ ■ ○ Spread Kent 1/1

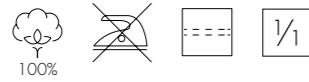
Oxford

- 693677/11 ☒ ▽ □ ○ Spread Kent 1/1
- 293677/11 ☒ ▽ □ ○ Spread Kent 1/1
- 193677/11 ☒ ▽ ■ ○ Spread Kent 1/1

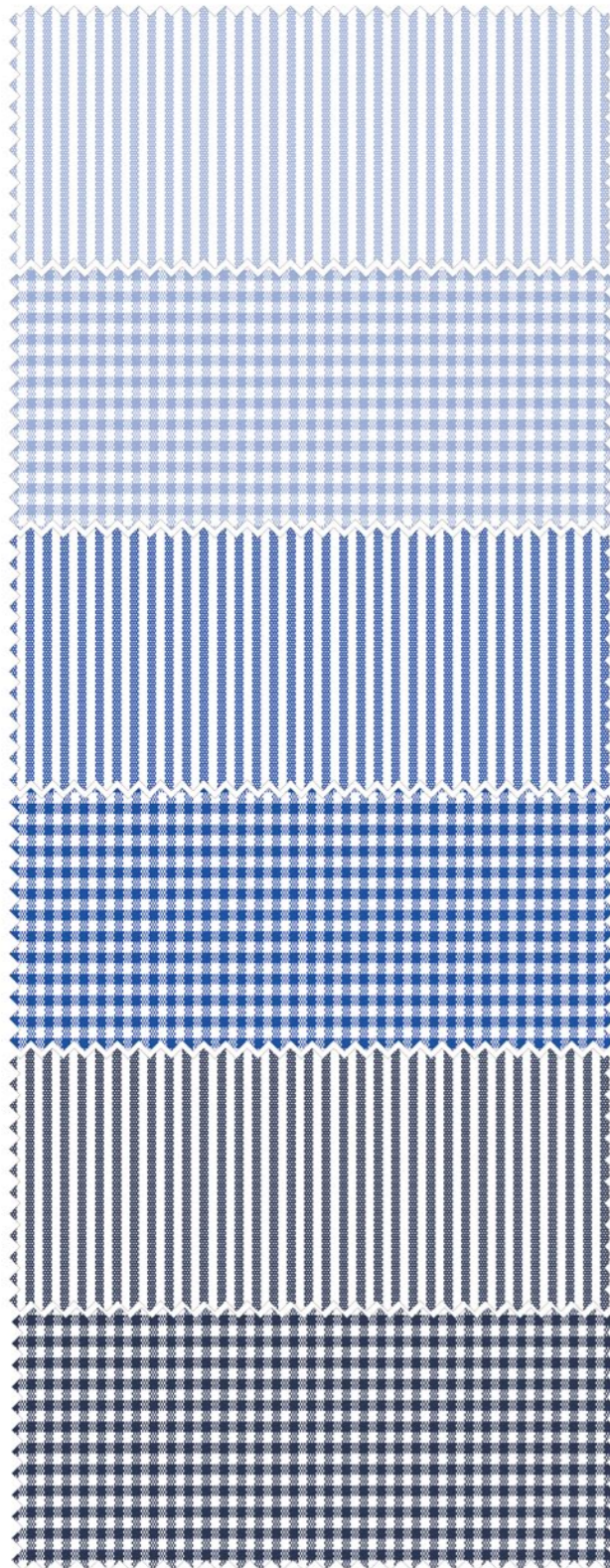
Oxford



- Slim Size: 14 - 17¼ inch | Größe: 36 - 45
- ▼ Shaped Size: 14½ - 18 inch | Größe: 37 - 46
- Regular Size: 15 - 19 inch | Größe: 38 - 48



Office



- 693640/11 ☒ ■ ▼ □ ○ Business Kent 1/1
- 293640/11 ☒ □ ▼ □ ○ Business Kent 1/1
- 193640/11 ☒ □ ▼ ■ ○ Business Kent 1/1 ☒

- 693660/12 ☒ ■ ▼ □ ○ Business Kent 1/1
- 293660/12 ☒ □ ▼ □ ○ Business Kent 1/1
- 193660/12 ☒ □ ▼ ■ ○ Business Kent 1/1 ☒

- 693640/15 ☒ ■ ▼ □ ○ Business Kent 1/1
- 293640/15 ☒ □ ▼ □ ○ Business Kent 1/1
- 193640/15 ☒ □ ▼ ■ ○ Business Kent 1/1 ☒

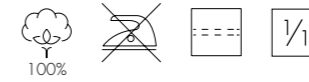
- 693660/16 ☒ ■ ▼ □ ○ Business Kent 1/1
- 293660/16 ☒ □ ▼ □ ○ Business Kent 1/1
- 193660/16 ☒ □ ▼ ■ ○ Business Kent 1/1 ☒

- 693640/19 ☒ ■ ▼ □ ○ Business Kent 1/1
- 293640/19 ☒ □ ▼ □ ○ Business Kent 1/1
- 193640/19 ☒ □ ▼ ■ ○ Business Kent 1/1 ☒

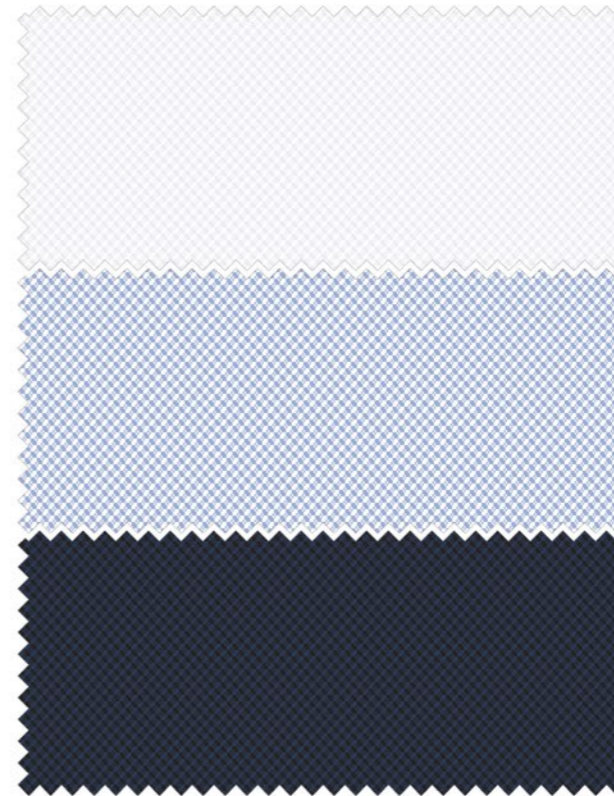
- 693660/19 ☒ ■ ▼ □ ○ Business Kent 1/1
- 293660/19 ☒ □ ▼ □ ○ Business Kent 1/1
- 193660/19 ☒ □ ▼ ■ ○ Business Kent 1/1 ☒



- Slim Size: 14 - 17¼ inch | Größe: 36 - 45
- ▼ Shaped Size: 14½ - 18 inch | Größe: 37 - 46
- Regular Size: 15 - 19 inch | Größe: 38 - 48



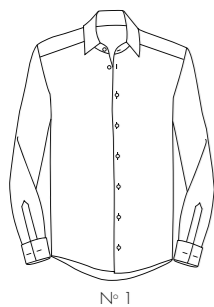
Structure



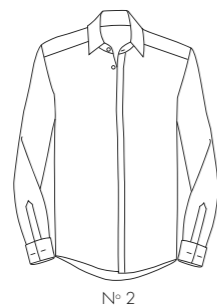
- 693650/01 ☒ ■ ▼ □ ○ Business Kent 1/1
- 293650/01 ☒ □ ▼ □ ○ Business Kent 1/1
- 193650/01 ☒ □ ▼ ■ ○ Business Kent 1/1 ☒

- 693650/11 ☒ ■ ▼ □ ○ Business Kent 1/1
- 293650/11 ☒ □ ▼ □ ○ Business Kent 1/1
- 193650/11 ☒ □ ▼ ■ ○ Business Kent 1/1 ☒

- 693650/19 ☒ ■ ▼ □ ○ Business Kent 1/1
- 293650/19 ☒ □ ▼ □ ○ Business Kent 1/1
- 193650/19 ☒ □ ▼ ■ ○ Business Kent 1/1 ☒

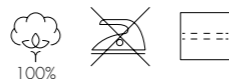


N° 1

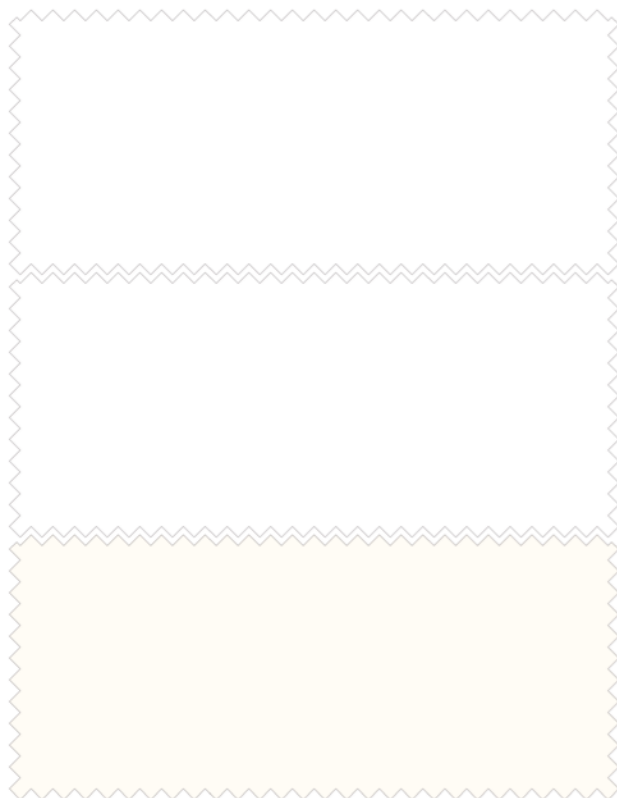


N° 2

- **Slim** Size: 14 - 17¼ inch | Größe: 36 - 45
- ▼ **Shaped** Size: 14½ - 18 inch | Größe: 37 - 46
- **Reglular** Size: 15 - 19 inch | Größe: 38 - 48



Gala



- 666244/01 ☒ ■ ▼ □ ○ Business Kent UMA
- 021006/01 ☒ □ ▼ □ ○ Business Kent UMA
- 001007/01 ☒ □ ▼ ■ ○ Business Kent UMA 🇮🇹

Poplin N° 1

- 675674/01 ☒ ■ ▼ □ ○ Business Kent Party UMA
- 245270/01 ☒ □ ▼ □ ○ Business Kent Party UMA
- 001034/01 ☒ □ ▼ ■ ○ Business Kent Party UMA 🇮🇹

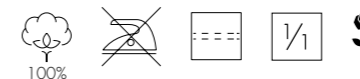
Poplin N° 2

- 245270/21 ☒ □ ▼ □ ○ Business Kent Party UMA 🇮🇹

Poplin N° 2



- **Slim** Size: 14 - 17¼ inch | Größe: 36 - 45
- ▼ **Shaped** Size: 14½ - 18 inch | Größe: 37 - 46
- **Reglular** Size: 15 - 19 inch | Größe: 38 - 48



Original



- 676550/01 ☒ ■ ▼ □ ○ Business Kent 1/1
- 246470/01 ☒ □ ▼ □ ○ Business Kent 1/1
- 112560/01 ☒ □ ▼ ■ ○ Business Kent 1/1

Twill

Womenswear Special

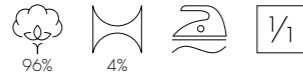


Seidensticker blouses represent the spirit of time and as sense of style. The blouses are available in two tailorings Slim Fit and Regular Fit convince with non-iron and easy-iron qualities and with a sophisticated style.

Blusen von Seidensticker verkörpern Zeitgeist und Geschmack. In den zwei Silhouetten Slim Fit und Regular Fit überzeugen die Blusenmodelle mit bügelfreien und bügelleichten Qualitäten und einer anspruchsvollen Stilistik.



Slim Size: 32 - 48 | Größe: 32 - 48



Poplin

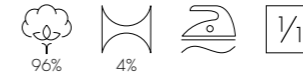


080612/01 Slim

Kent 1/1



Slim Size: 32 - 46 | Größe: 32 - 46



Poplin



080620/01 Slim

Kent 1/1



080620/18 Slim

Kent 1/1 *



080620/39 Slim

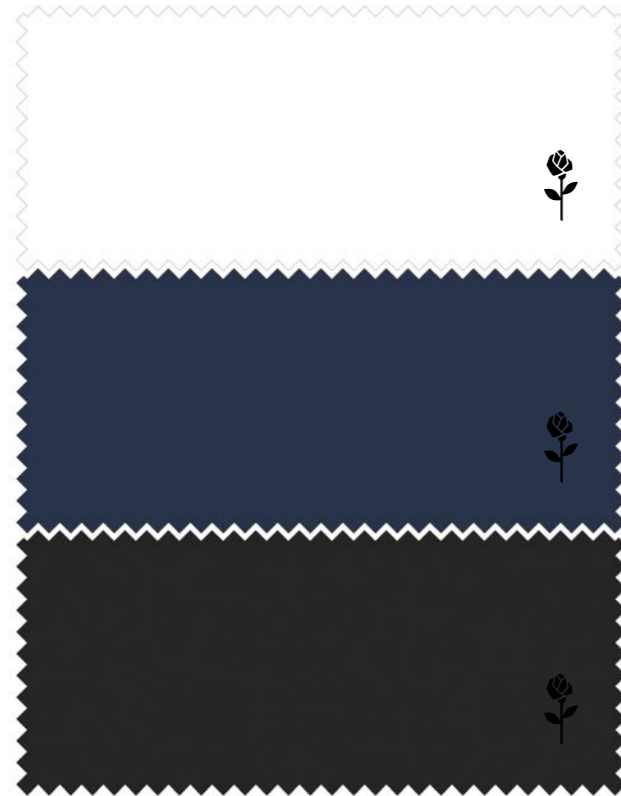
Kent 1/1



Slim Size: 32 - 48 | Größe: 32 - 48



Poplin



118201/01 Slim Kelch 1/1

118201/18 Slim Kelch 1/1

118201/39 Slim Kelch 1/1



Slim Size: 32 - 48 | Größe: 32 - 48



Poplin



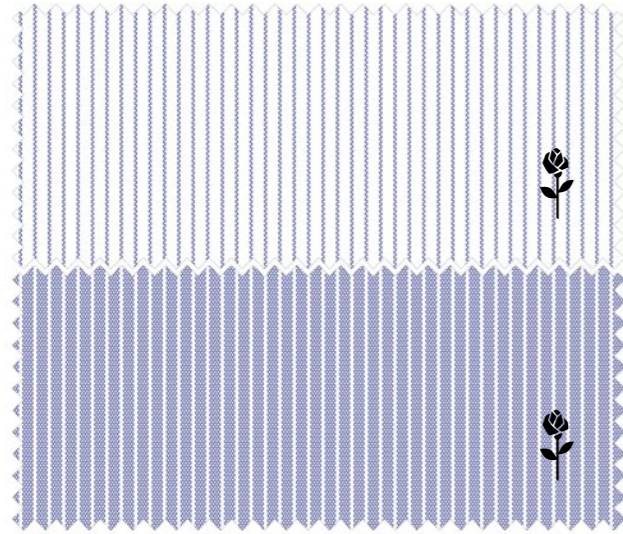
080613/45 Slim Kent 1/1



Slim Size: 34 - 46 | Größe: 34 - 46

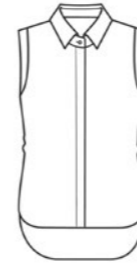


Poplin



080615/12 Slim Kent 1/1

080615/11 Slim Kent 1/1



Slim Size: 34 - 48 | Größe: 34 - 48



Poplin



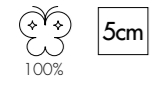
127406/01 Slim Kent OA

Accessories & T-Shirts



The tie is still the must-have item for daily business outfits. For more formal events, we also offer two types of Bow Ties and a matching Pochette. Our T-shirts shall be regarded as accessory by the shirt wearer and lead to a feeling of being completely dressed. Whether roundnecked, V-necked or Tanktop in convincing quality.

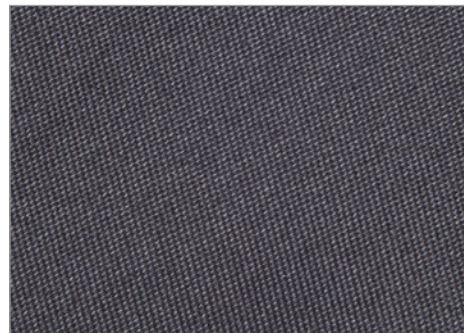
Als Accessoire ist die Krawatte weiterhin das Must-Have für den Business-Alltag. Für formellere Anlässe bieten wir Ihnen zusätzlich zwei Varianten an Fliegen und eine passende Pochette an. Unsere T-Shirts verstehen sich als Accessoire mit dem sich der Hemdenträger einfach angezogener fühlt. Ob O-Neck, V-Neck oder Tanktop in einer überzeugenden Qualität.



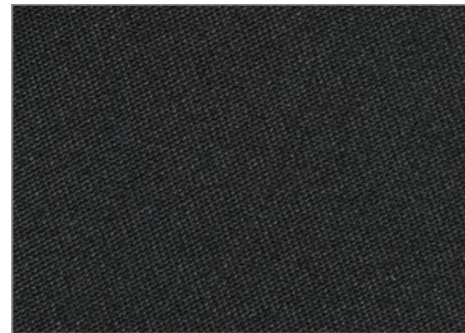
Ties



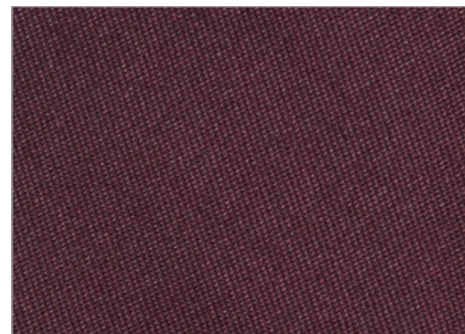
175083/19



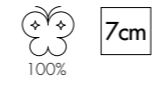
175083/34



175083/39



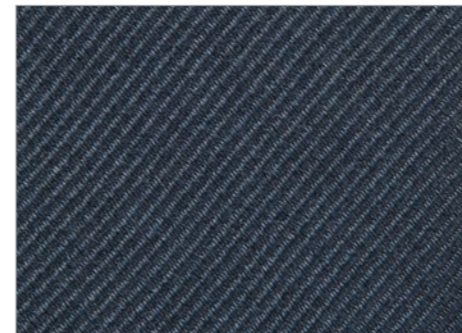
175083/49



Ties



171090/14



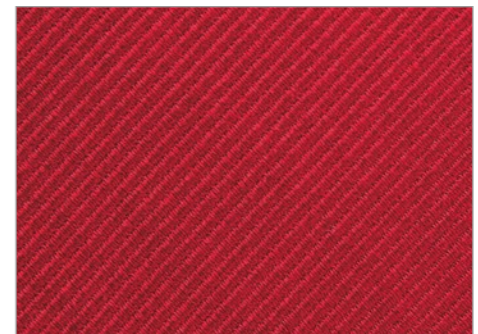
171090/18



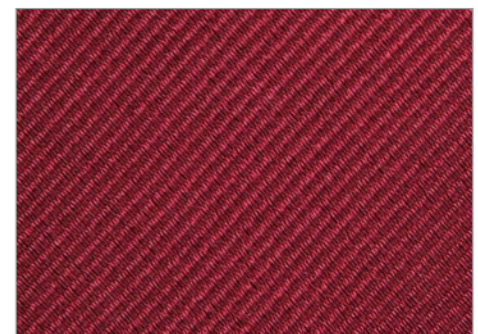
171090/38



171090/31



171090/45



171090/48

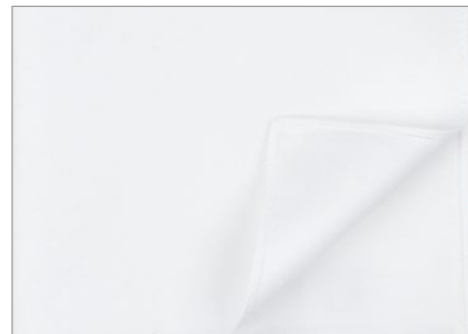
Bow Ties & Pochette



Bow Tie
176127/39



Bow Tie
176137/39



Pochette
176149/01

T-Shirts

Size: S - XXL | Größe: S - XXL



242491/01 V-Neck 1/2

242490/01 O-Neck 1/2

242492/01 Tanktop

Measurements Menswear

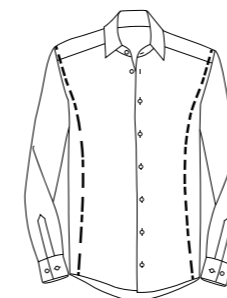
✘ X-SLIM	XS	S	M	L	XL	XXL	3XL	4XL	5XL	6XL
Collar Size Halsweite	36	37/38	39/40	41/42	43/44	·	·	·	·	·
Chest measurements Oberweite	94	102	110	118	126	·	·	·	·	·
Waist Taille	78	86	94	102	110	·	·	·	·	·
Sleeve length Ärmellänge N	66,5	66,5	66,5	66,5	67,5	·	·	·	·	·
Sleeve length Ärmellänge ELA	68	69	70	71	71	·	·	·	·	·
Sleeve length Ärmellänge 1/2	23	23	23	23	23	·	·	·	·	·
Body length Rumpflänge N+ 1/2	76	77	78	79	80	·	·	·	·	·
Body length Rumpflänge ELA	80	81	82	83	85	·	·	·	·	·

▮ SLIM	XS	S	M	L	XL	XXL	3XL	4XL	5XL	6XL
Collar Size Halsweite	36	37/38	39/40	41/42	43/44	45	·	·	·	·
Chest measurements Oberweite	96	104	112	118	126	134	·	·	·	·
Waist Taille	82	90	98	104	112	120	·	·	·	·
Sleeve length Ärmellänge N	66,5	66,5	66,5	66,5	67,5	67,5	·	·	·	·
Sleeve length Ärmellänge ELA	70	70	70	70	70	70	·	·	·	·
Sleeve length Ärmellänge 1/2	23	23	23	23	23	23	·	·	·	·
Body length Rumpflänge N+ 1/2	76	77	78	79	80	81	·	·	·	·
Body length Rumpflänge ELA	81	82	83	84	85	86	·	·	·	·

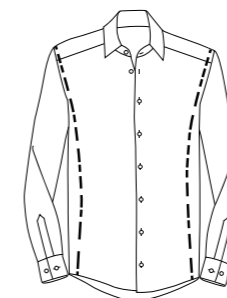
▼ SHAPED	XS	S	M	L	XL	XXL	3XL	4XL	5XL	6XL
Collar Size Halsweite	·	37/38	39/40	41/42	43/44	45/46	·	·	·	·
Chest measurements Oberweite	·	108	114	122	128	134	·	·	·	·
Waist Taille	·	94	102	108	114	120	·	·	·	·
Sleeve length Ärmellänge N	·	66,5	66,5	66,5	67,5	67,5	·	·	·	·
Sleeve length Ärmellänge ELA	·	71	71	71	71	71	·	·	·	·
Sleeve length Ärmellänge 1/2	·	25	25	25	25	25	·	·	·	·
Body length Rumpflänge N+ 1/2	·	79	80	81	82	83	·	·	·	·
Body length Rumpflänge ELA	·	82	83	84	85	86	·	·	·	·

■ REGULAR	XS	S	M	L	XL	XXL	3XL	4XL	5XL	6XL
Collar Size Halsweite	·	38	39/40	41/42	43/44	45/46	47/48	49/50	51/52	53/54
Chest measurements Oberweite	·	110	116	124	132	140	150	156	160	164
Waist Taille	·	100	108	116	126	134	146	156	164	170
Sleeve length Ärmellänge N	·	66	66	66	66	66	66	66	66	66
Sleeve length Ärmellänge ELA	·	70	70	70	70	70	70	70	70	70
Sleeve length Ärmellänge 1/2	·	26	26	26	26	26	28	28	28	28
Body length Rumpflänge N+ 1/2	·	82	82	82	85	85	90	90	90	90
Body length Rumpflänge ELA	·	87	87	87	90	90	95	95	95	95

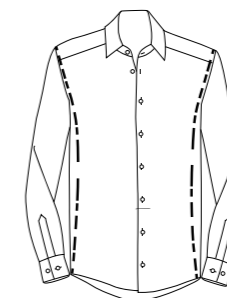
● COMFORT	XS	S	M	L	XL	XXL	3XL	4XL	5XL	6XL
Collar Size Halsweite	·	·	39/40	41/42	43/44	45/46	47/48	49/50	51/52	53/54
Chest measurements Oberweite	·	·	120	128	136	146	150	156	160	164
Waist Taille	·	·	114	124	134	146	154	162	168	172
Sleeve length Ärmellänge N	·	·	65	65	65	65	65	65	65	65
Sleeve length Ärmellänge ELA	·	·	69	69	69	69	69	69	69	69
Sleeve length Ärmellänge 1/2	·	·	28	28	28	28	28	28	28	28
Body length Rumpflänge N+ 1/2	·	·	82	82	85	90	90	90	90	90
Body length Rumpflänge ELA	·	·	87	87	90	95	95	95	95	95



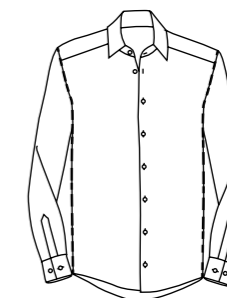
X-SLIM



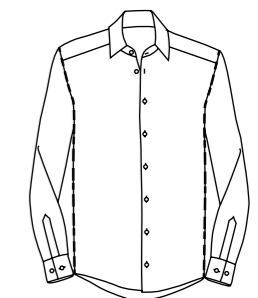
SLIM



SHAPED



REGULAR



COMFORT

Measurements Womenswear

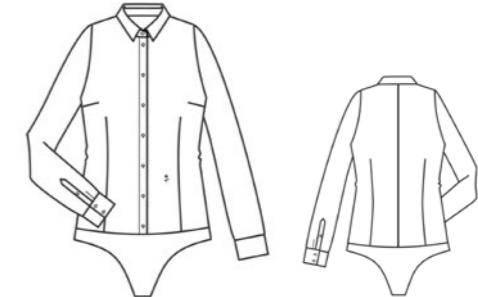
Slim 080612	32	34	36	38	40	42	44	46	48	50	52	54
Chest measurements Oberweite	87	91	95	99	103	110	116	122	122	.	.	.
Waist Taille	70	74	78	82	86	96	102	108	114	.	.	.
Body length Rumpflänge	66	66	66	66	68	68	69	69	70	.	.	.
Sleeve length Ärmellänge	62	62	62	63	63	63	63	64	64	.	.	.
Slim 080613 / -15 / -16 / -19	32	34	36	38	40	42	44	46	48	50	52	54
Chest measurements Oberweite	89	93	97	101	105	112	118	124	130	.	.	.
Waist Taille	72	76	80	84	88	98	104	110	116	.	.	.
Body length Rumpflänge	66	66	66	66	68	68	69	69	70	.	.	.
Sleeve length Ärmellänge	62	62	62	63	63	63	63	64	64	.	.	.
Slim 080614	32	34	36	38	40	42	44	46	48	50	52	54
Chest measurements Oberweite	90	94	98	102	106	113	119	125	131	.	.	.
Waist Taille	74	78	82	86	90	100	106	112	118	.	.	.
Body length Rumpflänge	64	64	64	64	66	66	67	67	68	.	.	.
Sleeve length Ärmellänge	28	28	29	29	29	30	30	31	31	.	.	.
Slim 080620	32	34	36	38	40	42	44	46	48	50	52	54
Chest measurements Oberweite	91	95	99	103	107	112	118	123
Waist Taille	68	72	76	80	84	92	98	104
Body length Rumpflänge	59	60	60	60	60	61	61	61
Sleeve length Ärmellänge	62	62	63	63	63	64	64	64
Slim 080635	32	34	36	38	40	42	44	46	48	50	52	54
Chest measurements Oberweite	89	93	97	101	105	112	118	124	130	.	.	.
Waist Taille	72	76	80	84	88	98	104	110	116	.	.	.
Body length Rumpflänge	66	66	66	66	68	68	69	69	70	.	.	.
Sleeve length Ärmellänge	62	62	62	63	63	63	63	64	64	.	.	.



080612

080613
080615
080616
080619

080614



080620



080635

Measurements Womenswear

Slim 080636	32	34	36	38	40	42	44	46	48	50	52	54
Chest measurements Oberweite	90	94	98	102	106	113	119	125	131	.	.	.
Waist Taille	74	78	82	86	90	100	106	112	118	.	.	.
Body length Rumpflänge	64	64	64	64	66	66	67	67	68	.	.	.
Sleeve length Ärmellänge	26	26	27	27	27	28	28	29	29	.	.	.
Slim 118201	32	34	36	38	40	42	44	46	48	50	52	54
Chest measurements Oberweite	89	93	97	101	105	112	118	124	130	.	.	.
Waist Taille	70	74	78	82	86	98	104	110	116	.	.	.
Body length Rumpflänge	72	72	73	73	74	74	76	76	76	.	.	.
Sleeve length Ärmellänge	62	62	62	63	63	63	63	64	64	.	.	.
Slim 127406	32	34	36	38	40	42	44	46	48	50	52	54
Chest measurements Oberweite	.	92	96	100	105	112	118	124	130	.	.	.
Waist Taille	.	87	91	95	100	108	114	120	126	.	.	.
Body length Rumpflänge	.	64	64	64	66	66	67	67	68	.	.	.
Sleeve length Ärmellänge
Regular 080604	32	34	36	38	40	42	44	46	48	50	52	54
Chest measurements Oberweite	.	94	98	102	106	110	116	121	127	132	138	143
Waist Taille	.	81	85	89	94	98	104	110	116	122	129	134
Body length Rumpflänge	.	64	64	64	66	67	68	70	71	72	73	75
Sleeve length Ärmellänge	.	62	62	62	63	63	63	63	64	64	64	64
Regular 080605	32	34	36	38	40	42	44	46	48	50	52	54
Chest measurements Oberweite	.	94	98	102	106	110	116	121	127	132	138	143
Waist Taille	.	81	85	89	94	98	104	110	116	122	129	134
Body length Rumpflänge	.	63	64	64	66	67	68	70	71	72	73	75
Sleeve length Ärmellänge	.	26	27	27	27	28	28	29	29	29	30	30



080636



118201



127406



080604



080605

